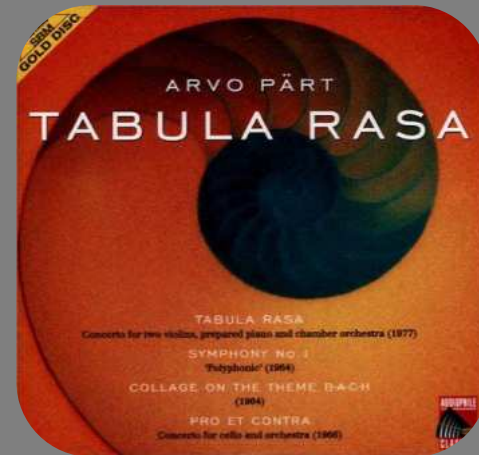
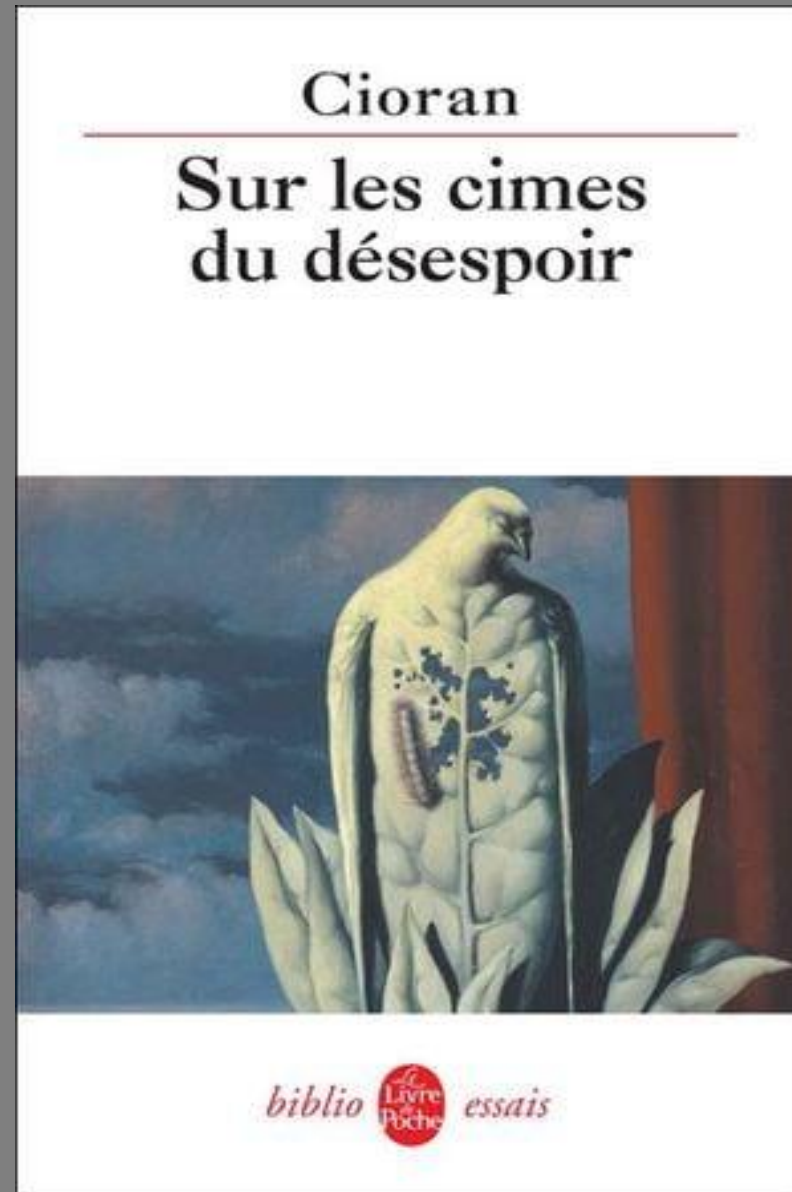


Diaporama – Désespoir

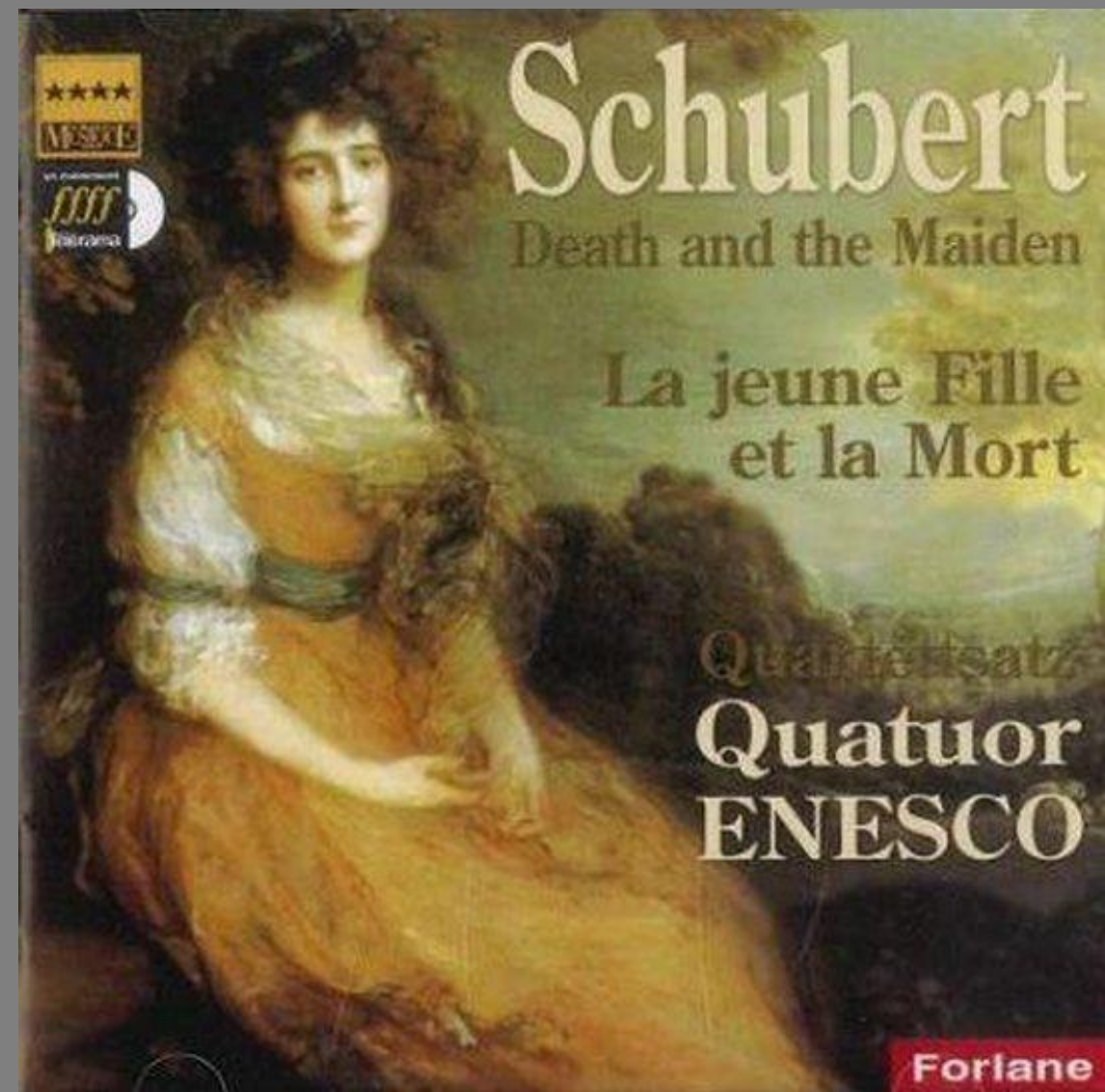
SOMMAIRE



Sur les cimes du désespoir, Emil Cioran, 1934



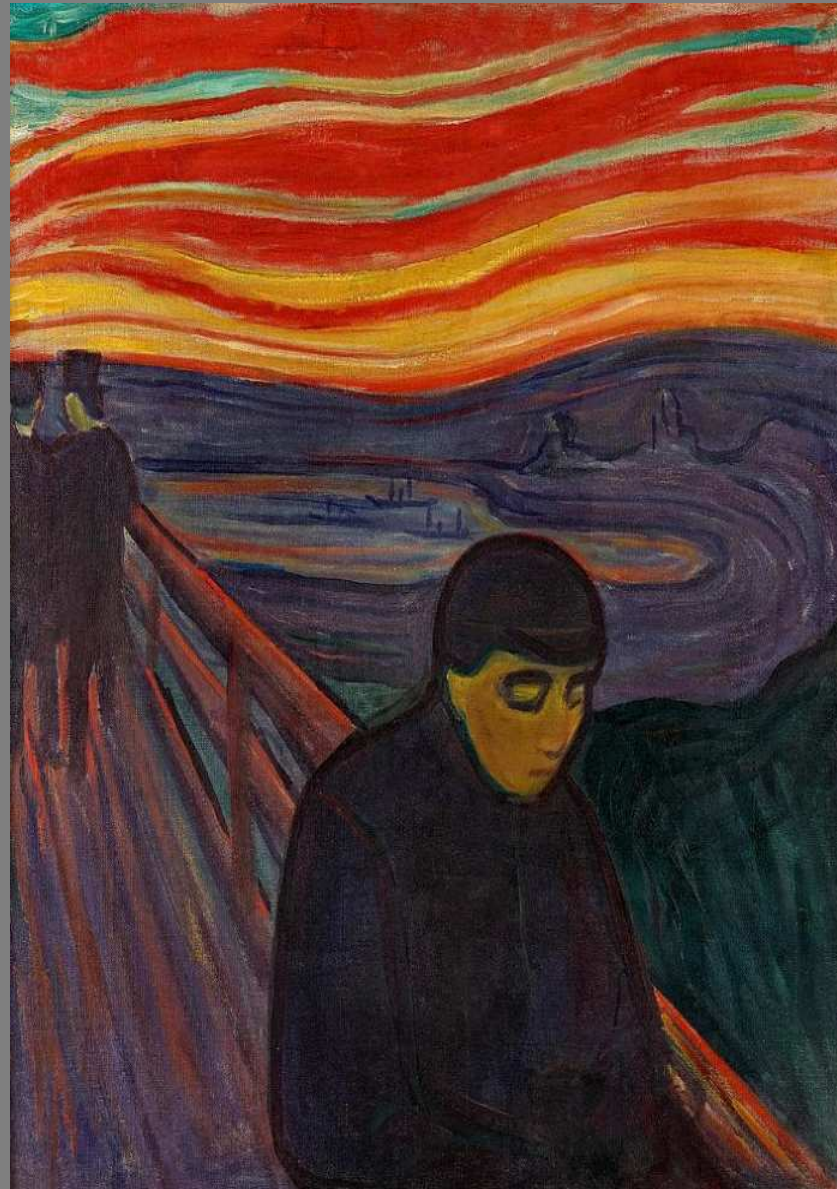
***La Jeune Fille et la Mort*, Franz Schubert, 1824**





***L'Angoisse*, August Friedrich Schenck, vers 1878**

***Désespoir*, Edvard Munch, 1894**



***La Femme à l'Enfant Mort*, Käthe Kollwitz, 1903**



***Le désespéré* de Gustave Courbet (vers 1845)**

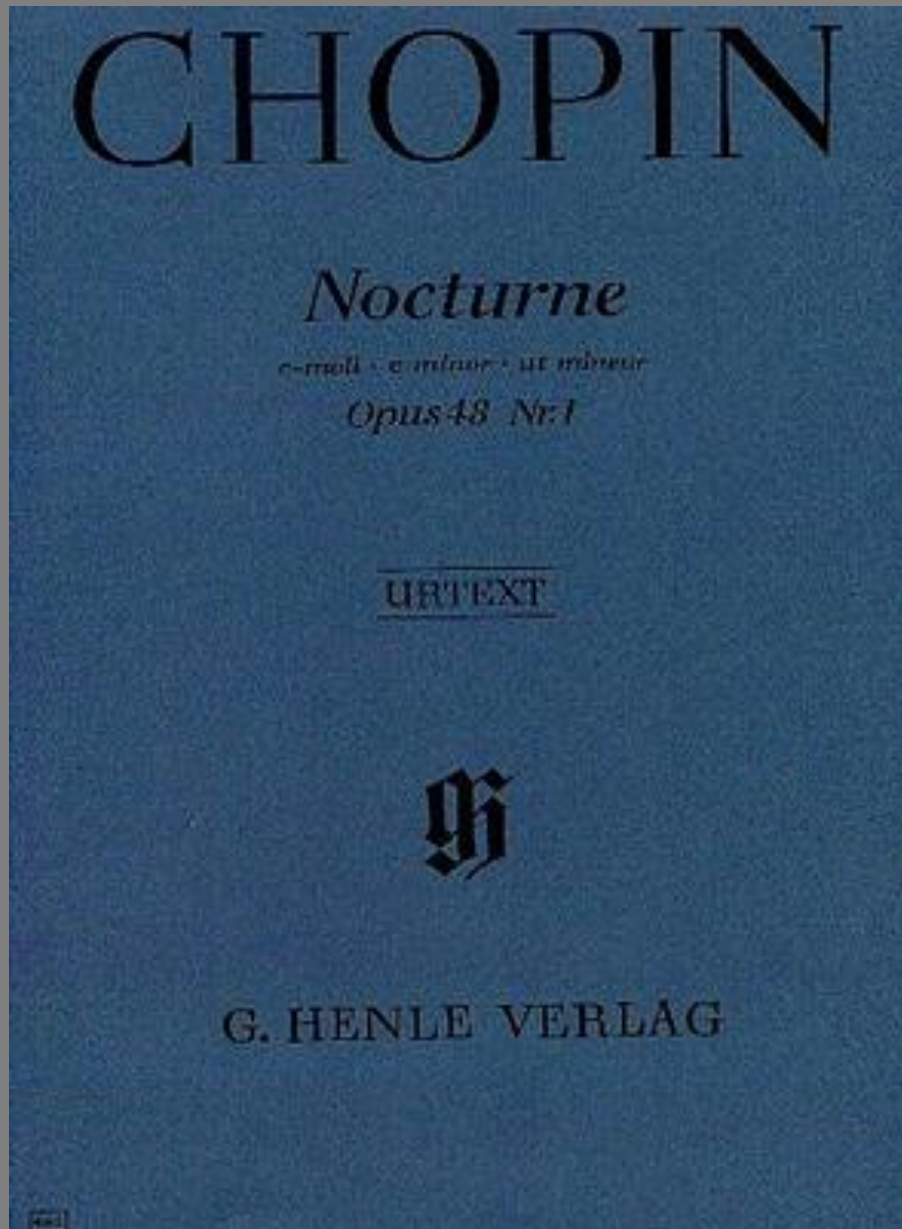




***Giselle* Adolphe Adam 1841**

***La pietà* de Michel-ange 1499**





Nocturne en ut dièse mineur de Frédéric Chopin

A Mademoiselle GENEVIEVE LARTIGUE

NOCTURNE
EN UT MINEUR

OUVRAGE PROTÉGÉ
PHOTOCOPIÉ
SANS AUTORISATION
même partielle
constituerait une contrefaçon

Transcription pour Hautbois
par TH. LALLIET
Op. 34

F. CHOPIN
Op. 48 N°1

HAUTBOIS

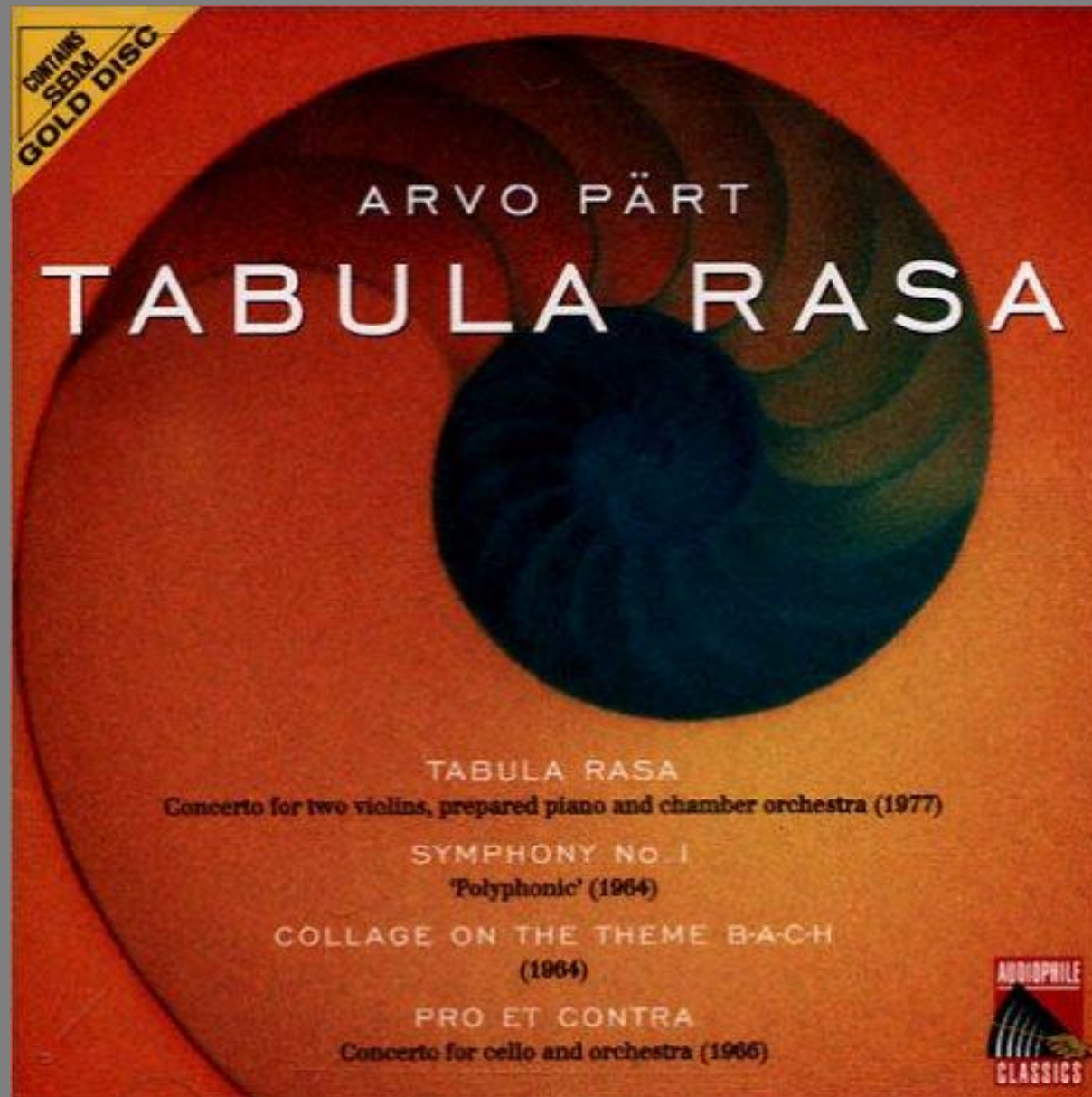
Lento

mezzo voce

p

The image shows a page of a musical score for the Nocturne in E-flat major, Opus 48 No. 1, transcribed for Oboe by Th. Lalliet. The score is in 3/4 time, E-flat major, and marked 'Lento'. It features four staves of music with various dynamics and articulations. The first staff begins with a 'mezzo voce' marking. The second staff has a 'p' (piano) marking. The third staff has a 'p' (piano) marking. The fourth staff has a 'p' (piano) marking. The score is written in a clear, legible font with standard musical notation.

Tabula rosa de Arvo pärt



Fin.